

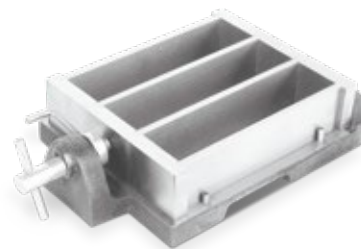
## THREE GANG MOULD FOR PRISMS

### Preparation of Mortar Prisms

These three gang moulds are used to cast mortar prism specimens for flexural and compression tests, with dimensions as per standard requirement. Made from special alloy steel with a minimum surface hardness of HV200 and flat surfaces ensure reliable test result.

#### Technical Specifications :

Model Number	NL 3006 X / 001 – A 001
Material	Carbon Steel & Cast Iron
Type of Prisms (mm)	40 x 40 x 160
Dimension (mm)	270 (L) x 167 (W) x 60 (H)
Approx. Weight	6.5 kg



#### Technical Specifications :

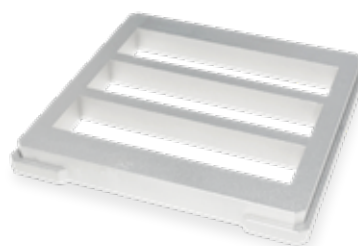
Model Number	NL 3037 X / 003
Material	Carbon Steel
Type of Prisms (mm)	40.1 x 40 x 160
Dimension (mm)	243 (L) x 175 (W) x 57 (H)
Hardness	Over 200 HV
Approx. Weight	9.5 kg
Standard	EN196-1, EN ISO 679, ASTM C348



Remarks: Each parts are with engraved number

#### NL 3037 X / 003 Optional Accessories :

Model Number	NL 3037 X 003 – A 101
Name	Aluminium Feeding Hopper
Product Dimension	195 (L) x 195 (W) x 20 (H) mm
Approx. Weight	0.95 kg



#### Technical Specifications :

Model Number	NL 3037 X / 004
Material	Carbon Steel
Type of Prisms (mm)	40 x 40 x 160
Dimension (mm)	350 (L) x 230 (W) x 55 (H)
Hardness	Over 200 HV
Approx. Weight	10.9 kg



Remarks: Each parts are with engraved number